

**Xypex Admix C-5000** simply has more performance muscle than other products in its field. Xypex Admix C-5000 is present and active throughout the entire concrete matrix from the moment it is poured and for the life of the concrete.

### Enhancing Durability

Xypex controls permeability which is a key link to greater durability, the long-term structural integrity, protective capacity and aesthetic qualities of the concrete. By preventing the penetration of aggressive chemicals, Xypex Admix C-5000 helps control the problems of sulphate attack, leaching, alkaline aggregate reaction, carbonation and corrosion caused by chloride ingress to reinforced concrete.

### Design Friendly

Xypex Admix will not adversely affect the strength, slump, air entrainment or workability of the concrete as required by the mix design. With Xypex Admix throughout the matrix, concrete is still handled, placed, finished and cured as usual. In other words, concrete containing Xypex Admix still behaves like conventional concrete.

### Compliance

Xypex Admix C-5000 complies with the requirements of AS1478.1 as a Type-SN Special purpose Admixture.



# XYPEX®

## ADMIX C-5000

### EXTENDING THE LIFE OF CONCRETE



**XYPEX®**  
XYPEX is a registered trademark of Xypex Chemical Corporation

Manufactured under license by **Concrete Waterproofing Manufacturing Pty. Ltd.**  
**T/A XYPEX AUSTRALIA ABN 96 093 161 963**  
45 Union Road, North Albury, NSW 2640  
P.O. Box 255, Lavington NSW, 2641  
Telephone: 02 6040 2444 Facsimile: 02 6040 2411  
Email: xypenq@xypex.com.au Website: www.xypex.com.au

Concrete Durability Enhancement by Crystallization™

Concrete Durability Enhancement by Crystallization™



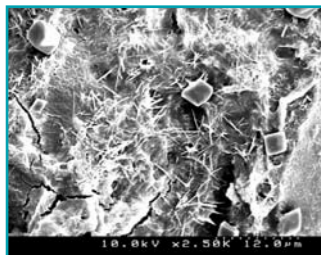
# IMPROVING CONCRETE PERFORMANCE... FROM THE START

## ADMIX C-5000

**Xypex Admix C-5000** has been developed specifically for the concrete industry to achieve optimal durability performance of reinforced concrete exposed to aggressive conditions. Supplied in 2.5kg soluble bags and dosed at a rate of 0.5% to the cementitious content, C-5000 simplifies handling in concrete plants and ensures cost effectiveness. It is strongly recommended for reinforced concrete subjected to aggressive environments including pre-cast, pre-stressed, post tensioned and shotcrete.

- Xypex Admix C-5000 is a powdered admixture consisting of portland cement and various active proprietary chemicals.
- Active chemicals react with the calcium silicate hydrates in a catalytic reaction which generates a non-soluble crystalline formation throughout the pores and capillary tracts of the concrete.
- The reaction products of Xypex Admix C-5000 are in mineral crystal form which prevents the penetration of deleterious ions into ordinary portland cement concrete, fly ash concrete and slag concrete.

Untreated Concrete



Xypex treated Concrete



### ADMIX C-5000 APPLICATIONS

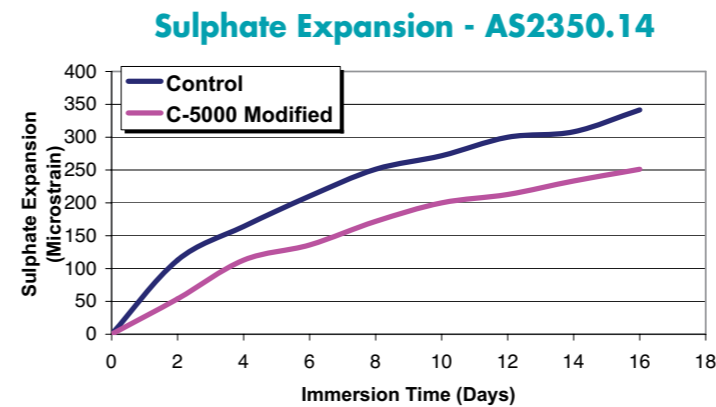
Xypex crystalline technology has been used throughout the world in a wide variety of concrete structures.

- Reservoirs
- Aquariums
- Swimming Pools
- Wastewater Treatment Plants
- Dams
- Tunnels
- Marine Structures
- Bridges
- Railway Substations



### Performance - More Muscle; More Value

ACCI Research on concretes modified with Xypex Admix C-5000 has found significantly improved properties compared to concrete without Xypex.



• used as a comparative indication demonstrating Xypex improvement over the control mix; please consult with Xypex Australia for further information.

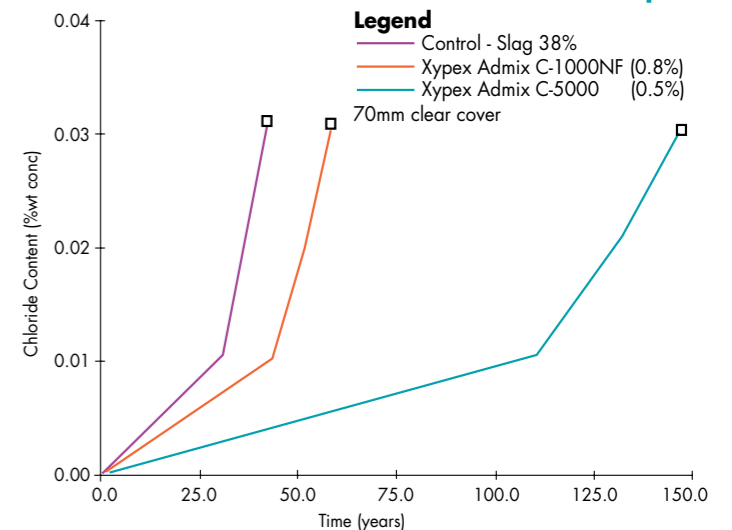
	Water Permeability Coefficient (m/s) under 10 Bars	Ratio to Control
<b>Control</b>	<b>2.36 E-13</b>	-
<b>Xypex C-5000</b>	<b>4.59 E-14</b>	<b>-81%</b>

Whilst strengths and drying shrinkages were typically improved, the most substantial improvements were in durability related properties such as:

- 1) Chloride Penetration
- 2) Sulphate Expansion
- 3) Liquid Permeability

which leads to increased service life of concrete.

### Chloride Concentration - Time at Cover Depth



• used as a comparative indication demonstrating Xypex improvement over the control mix; please consult with Xypex Australia for further information.

