

concrete waterproofing by crystallization™

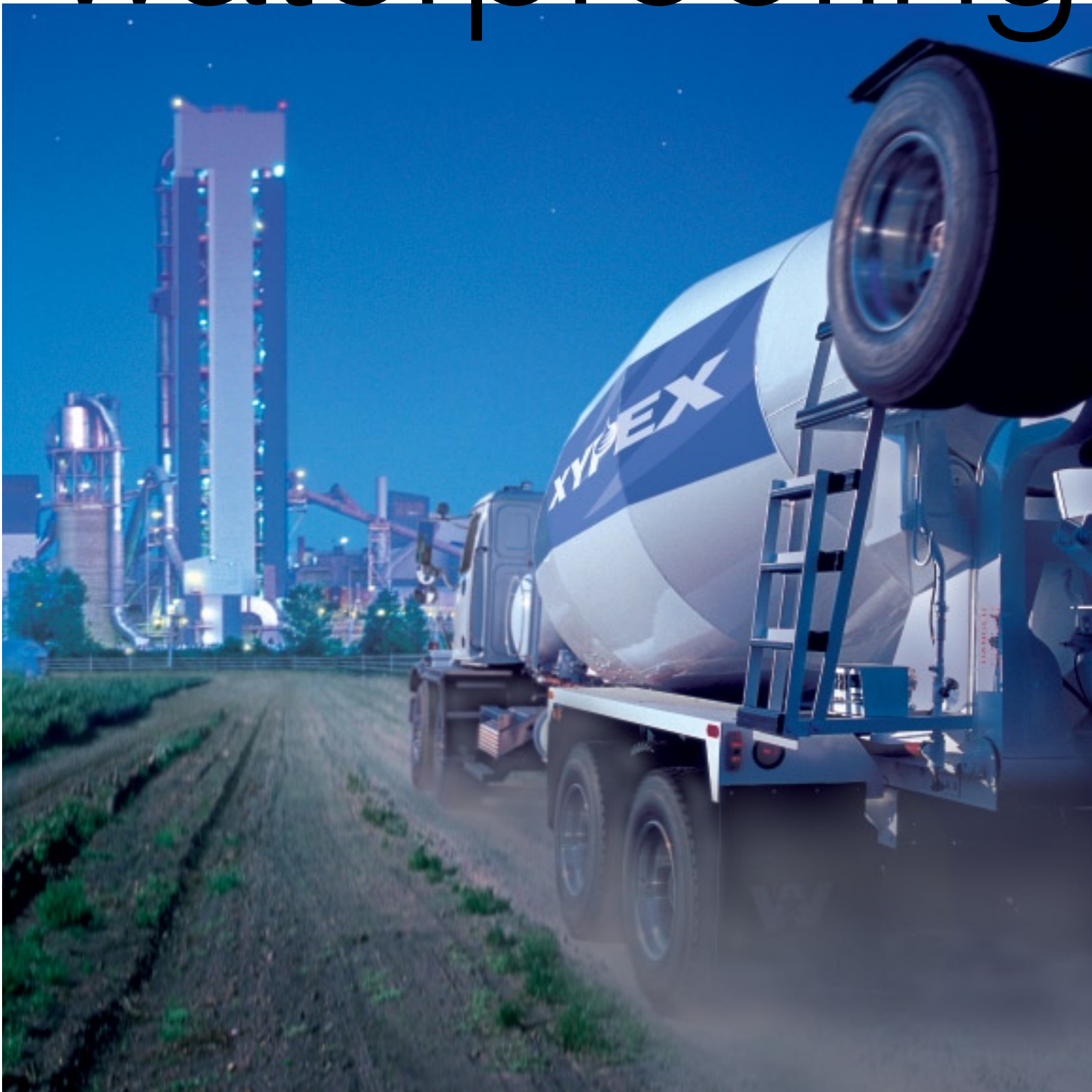
admix



XYPEX®
AUSTRALIA
Concrete Solutions

waterproof and protect your concrete as you pour it

waterproofing



i m p r o v i n g

concrete

xypex admix now!

Concrete, by its very nature lies open to the persistent challenges of water, chemicals and a wide variety of harsh environments. Xypex Admix meets these challenges before they become problems by reducing concrete's permeability and enhancing its durability...right from the start. **true integral waterproofing** Xypex Admix is a specialty product that is blended into the concrete at the time of batching. It outperforms other methods because of its unique ability to become a truly integral part of the concrete matrix. Utilizing Xypex's world-renowned crystalline technology, Xypex Admix seals the primary paths by which water and aggressive chemicals penetrate, attack, and ultimately threaten the long-term integrity of the concrete structure.

xypex admix advantages	
1	Integral Technology Xypex's unique crystallization process Becomes part of the concrete matrix Seals micro-cracks Permanent
2	Wide Performance Capabilities Resists extreme hydrostatic pressure and chemical attack Prevents freeze-thaw damage Enhances durability Non-toxic
3	Quality Control Thorough independent testing to world standards Extensive research and in-house analysis Technical support, field analysis and site supervision Quality Assurance Management System - ISO 9001
4	Value Engineering Increases flexibility in construction scheduling Not subject to climatic restraints No adverse effect on mix design Easy and less costly to install



performance.

a better solution

better project control Using Xypex Admix means that the waterproofing and pouring of concrete occur simultaneously. This means that engineers and contractors can exert much better control over the waterproofing production schedule. **better cost control** Construction schedules can be accelerated and cost savings realized by eliminating most of the time and labor costs associated with traditional waterproofing methods. This makes Xypex Admix less costly to install. **climate control** Hot, cold, wet, or dry, the prevailing climate does not inhibit the installation of Xypex Admix. It's already in the mix. *Better control. A better solution.*

admix applications

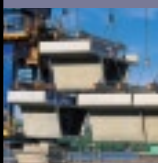
Xypex Admix has been used throughout the world in a wide variety of concrete structures. Installing Xypex Admix is easy and the method, flexible: poured-in-place, shotcrete, precast.



SHOTCRETE



POURED



PRECAST

- Reservoirs
- Aquariums
- Swimming Pools
- Decorative Pools
- Wastewater Treatment Plants
- Dams
- Tunnels & Subway Systems
- Bridge Structures
- Parking Structures
- Underground Vaults
- Foundations
- Manholes
- Concrete Pipes
- Marine Structures

design friendly

Xypex Admix will not adversely affect the strength, slump, air entrainment or workability of the concrete as formulated in the mix design. With Xypex Admix inside, concrete is still handled, placed, finished and cured as usual. In other words, concrete containing Xypex Admix still behaves like concrete.

living up to expectations

Xypex Admix's high performance standards have resulted in customer expectations that are equally high. Our unwavering commitment to quality is our way of managing these expectations. **proof in the lab** Xypex Admix has been thoroughly tested in independent labs throughout the world and according to international standards. Permeability, chemical resistance, compressive strength, freeze-thaw durability, potable water and other tests, all concluded positive results. **proof in the field** From major projects like the Panama Canal and the Pennsylvania Turnpike, to modest backyard swimming pools, Xypex Admix has consistently lived up to expectations.



strength in numbers

Xypex Admix is part of the Xypex Concrete Waterproofing and Protection System which also includes Xypex Coatings, Dry Shake and Repair products. This total system provides the product flexibility needed to realize the full potential of a Value Engineered concrete waterproofing strategy and the most appropriate and cost effective solution.

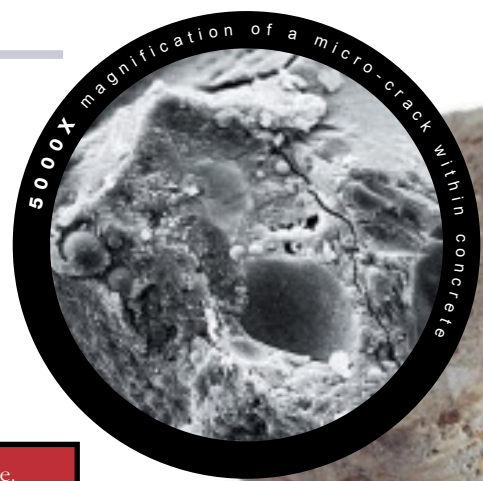


from the start

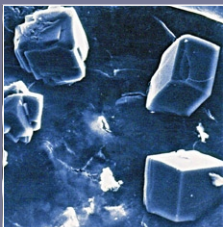
xypex admix @ work

pores, capillary tracts & micro-cracks

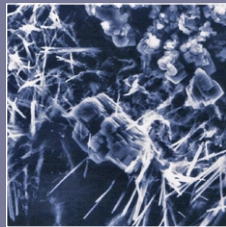
Xypex Admix is a cementitious, dry powder compound containing various active chemicals that take advantage of the inherent porous and chemical characteristics of concrete. These proprietary chemicals react with moisture and the natural chemical by-products of cement hydration to produce a non-soluble crystalline structure that becomes an integral part of the concrete matrix. Pores and capillary tracts are blocked, micro-cracks are sealed, and the concrete becomes impermeable to water and other liquids.



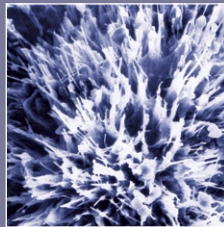
Xypex creates its crystallization effect within the pores and capillary tracts of concrete.



CONCRETE UNTREATED



CRYSTALLIZATION
BEGINS



CRYSTALLIZATION
MATURES

more muscle. more value.

Xypex Admix simply has more performance muscle than other products in its field. **throughout the matrix** Xypex Admix is present and active throughout the entire concrete matrix from the moment it's poured. **greater permeability control** Xypex Admix meets the challenges of concrete permeability by sealing the concrete against water penetration and it does so from any direction, even when water is under an extreme head of pressure. **enhancing durability** Because Xypex controls permeability, it is an important link to greater durability - the long-term structural integrity, protective capacity and aesthetic qualities of the concrete. By preventing the penetration of aggressive chemicals, Xypex Admix helps control the problems of sulphate attack, leaching, alkali-aggregate reaction, carbonation, and corrosion. Xypex Admix also offsets deterioration problems caused by freeze-thaw cycles, wetting and drying, and temperature changes. *More muscle. More value.*

inside for the long haul

A product for the long haul, Xypex Admix can be trusted to perform to original specifications throughout the life of the concrete. Even when changing conditions affect the concrete structure, Xypex Admix will reactivate to waterproof and protect it.

worldwide

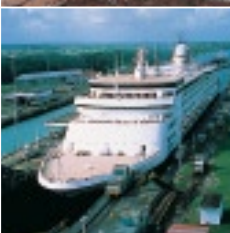
locations in over 70 countries

Xypex Chemical Corporation has long recognized the importance of being readily available to respond to the questions and concerns of our customers, worldwide. Our well established manufacturing and distribution network in more than 60 countries provides us first-hand information on local construction procedures and environmental variables. It's the kind of knowledge upon which we confidently base our technical advice and support. It's know-how you can count on, now.



Stadium Australia - Homebush Bay, Australia

Xypex Admix was used in 25,000 cubic meters of concrete to waterproof and protect foundation walls, floors, tanks, suspended slabs and seating areas.



Panama Canal - Panama

Shotcrete containing Xypex Admix was applied to the Gatun Locks and all culvert tunnels, to help slow down the aging process in these 80-year-old structures.



Pennsylvania Turnpike - Pennsylvania, USA

Over 1.5 million lbs. of Xypex Admix were used in the concrete median barriers to protect against freeze-thaw deterioration and chloride ion attack.

xypex admix now!

XYPEX[®]
AUSTRALIA
Concrete Solutions

45 Union Rd, North Albury NSW 2640.
PO Box 255, Lavington NSW 2641.
Ph: +61 2 6040 2444; Fax: +61 2 6040 2411

Email: xypenq@xypex.com.au
www.xypex.com.au