

KUNISEAL C-31DS

Concrete Joint Waterproofing Material

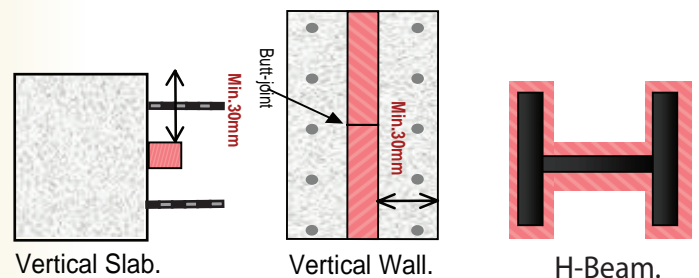
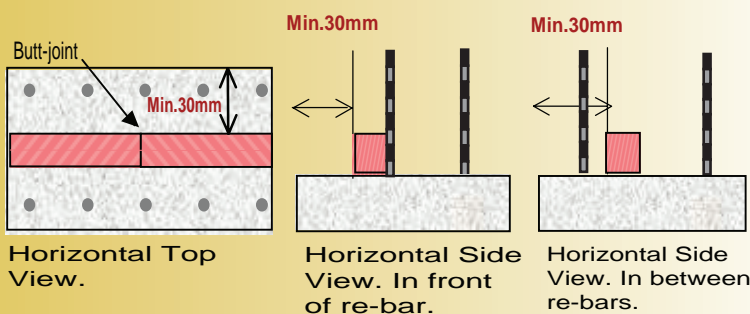
KuniSeal is a composite product consisting of high swelling bentonite, mineral oil and modified polymer, which is specifically designed to act as a moisture barrier in concrete construction joints. Its unique characteristics give it long lasting durability and superior waterproofing results even when subjected to high hydrostatic pressure and in marine environments and it is easy to install.



TYPICAL ON SITE INSTALLATION



INSTALLATION POSITIONING



SPECIAL FEATURES

- SELF ADHESIVE.
- INSTALLATION TIME REDUCED.
- EASY TO SHAPE AND FORM TO JOINT.
- NO STRESS TO CONCRETE JOINTS.
- LONG LASTING IN SITU DURABILITY.
- DELAYED SWELL ALLOWING FOR ADVERSE ON SITE WEATHER.
- SUPERIOR RESULTS IN STOPPING MOISTURE PENETRATION.
- SUITABLE FOR MARINE ENVIRONMENTS.

METHOD OF INSTALLATION



BRUSH OFF DIRT AND WET CONCRETE JOINT.



OR WET KUNISEAL.



PLACE KUNISEAL ON JOINT AND PRESS IN PLACE.



SLOWLY PRESS ON TO CONNECTING SLAB JOINT.



PLACE ON VERTICLE FOOTING JOINT. NAIL IF REQUIRED.



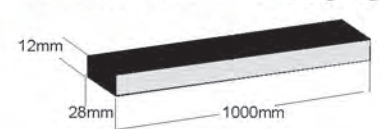
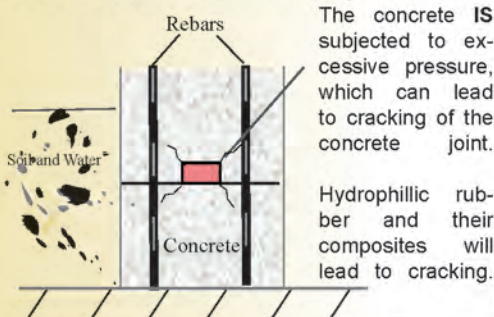
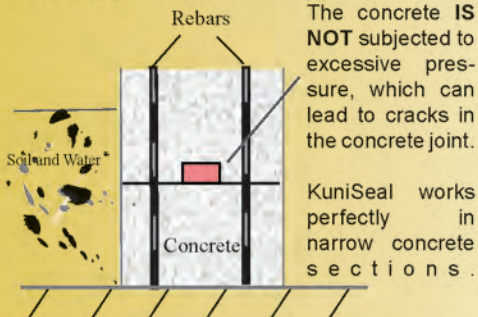
CONNECT TWO PIECES BY END-BUTT JOINING.

CAUTION: DO NOT PEEL OFF COVERING HYDRO-BAG, THIS IS THE ADHESIVE.

KuniSeal C-31Ds

Characteristics of other products.

Dimensions and Packaging



KuniSeal is wrapped in Hydro-Film, do not remove.

KuniSeal C-31DS is packed 20 pieces per cardboard carton.

Chemical Composition

Bentonite	≤ 70%
Oil Compound	≤ 40%
Modified polymer	≤ 30%

Test Results

Hydrostatic Pressure Resistance	0.5 Mpa/72.5psi
Adhesion to concrete *1	632.7gf/cm ²
Adhesion to Iron plate *1	296.7gf/cm ²
Specific Gravity *1	<1.20
Ignition Loss *1, *3	<40 wt%
Coefficient of swelling *2	>110%

* NOTE

- *1 Measurement after 1 day
- *2 Soaking one side in water for 24 hours
- *3 Subjected to 1000 Deg-C for 1 hour

WARRANTY

The Seller warrants that at the time of shipment, its products are free from defects in material and workmanship. There is no expressed warranty, the manufacturer, (Kunimine Industries Co., Ltd.) and or their agents, known as (Seller) disclaim any implied warranties including but not limited to the warranty of merchantability and fitness for any particular purpose indicated to Buyer by Seller. Seller's sole obligation under this warranty shall be, upon prompt written notice by the Buyer of any defect or defects, and inspection, if required by the Seller, to replace or at Seller's option to allow a credit for any defective products expressly warranted herein against defects by Seller. Upon purchase of Seller's product(s), it is expressly agreed upon by Buyer that this remedy of replacement or credit, at Seller's option, is Buyer's exclusive remedy under this warranty, in no event shall Seller be liable for consequential loss or damages.

Distributed by:



Sustainability In Concrete Structures

76 Merkel Street, Thurgoona
NSW, 2640. Australia.
PO Box 255, Lavington
NSW, 2641. Australia.
A.B.N. 96 093 161 963

T: +61 2 6040 2444
F: +61 2 6040 2411
E: xypenq@xypex.com.au
www.xypex.com.au

Manufactured by:
Kunimine Industries Cp., Ltd.
Tokyo, Japan